

JULY, 2024

# Forbes

INDIA

BRAND PROMOTION

# Roaring Creativity



INDIA'S  
TOP  
20  
DESIGN LIONS  
IN ARCHITECTURE AND  
INTERIOR DESIGN

FORBES INDIA

MARQUEE

A special sponsored presentation complimentary with Forbes India. Not for sale.

Network 18

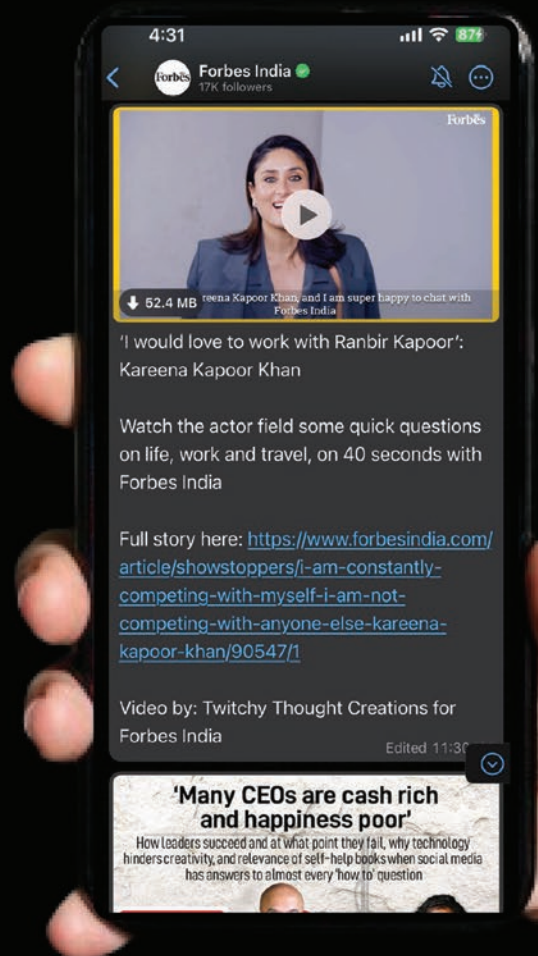
INDIA  
**Forbes**



FOLLOW THE ONE WHO

**BRING TECH  
& LIFESTYLE  
TRENDS  
AT YOUR  
FINGERTIPS**

SCAN TO FOLLOW



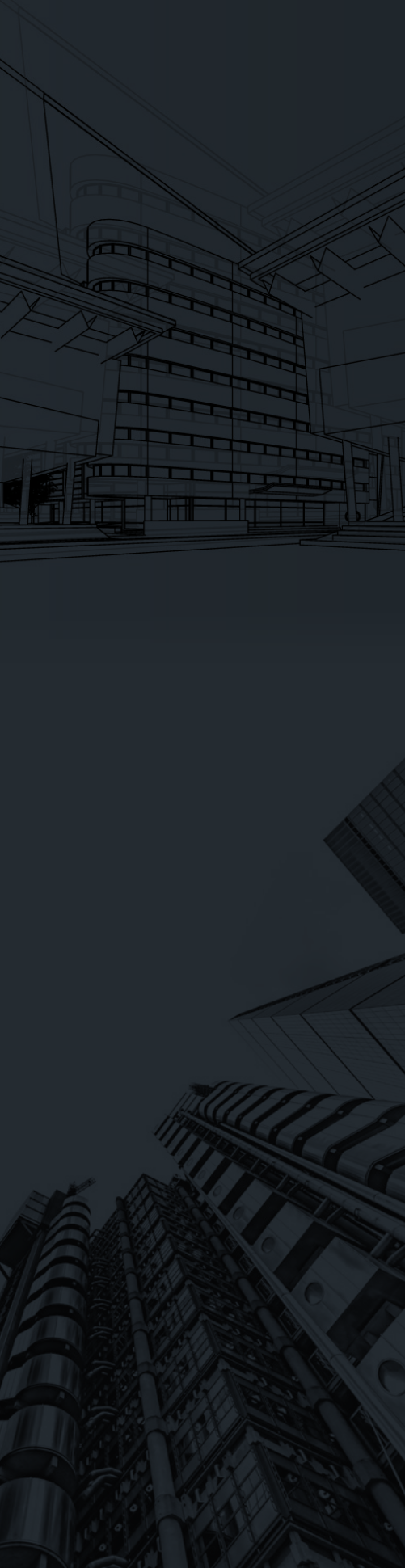


# Overview



In the ever-evolving world of architecture and design, landscapes are continuously transformed by visionaries who dare to push boundaries and redefine aesthetics. This marquee issue of Forbes celebrates the brilliance and creativity of architects and design studios from Eastern and Western India—regions rich with profound architectural heritage and burgeoning hubs of modern innovation.

Eastern India, with its intricate blend of historical influences and contemporary trends, offers a unique tapestry of architectural marvels. The region boasts a heritage that spans centuries, from the timeless elegance of ancient temples and stupas to the colonial charm of British-era edifices like Kolkata's Victoria Memorial and Howrah Bridge. Today, this architectural landscape is being transformed by modern architects who integrate traditional motifs with cutting-edge technology. Institutions like IIM Kolkata's sustainable campus and Bhubaneswar's Kalinga Institute of Social Sciences reflect this fusion. Community centers such as Kolkata's Rabindra Tirtha and Guwahati's Srimanta Sankaradeva Kalakshetra combine modern facilities with cultural heritage,



creating functional, aesthetically pleasing spaces that serve contemporary needs while honouring the past.

Western India boasts a rich tapestry of architectural styles, from the ancient cave temples of Ajanta and Ellora to the intricate carvings of Modhera's Sun Temple and the grandeur of Mumbai's Victorian Gothic and Art Deco buildings. Today's architects here seamlessly blend tradition with innovation, evident in projects like the Bandra-Worli Sea Link and Mumbai's modern residential and commercial spaces. Sustainability and smart technology are paramount, with architects crafting eco-friendly designs that minimize environmental impact while maximizing beauty and functionality.

This issue dives deep into the minds of the architectural visionaries who are shaping skylines and redefining our interaction with built environments. These innovators are tackling pressing issues like sustainability, urbanization, and cultural preservation, crafting solutions that resonate on a global scale. These trailblazers are redefining what is possible, pushing the boundaries of design, and integrating advanced technologies with traditional practices. Their work exemplifies how thoughtful design can create spaces that are not only functional and aesthetically pleasing but also environmentally responsible and socially impactful.

At Forbes, we're committed to amplifying their voices and advancing the conversation around architecture. We provide a platform for these thought leaders to share their perspectives, inspire the next generation, and contribute to the ever-evolving narrative of design. By celebrating their achievements and philosophies, we aim to illuminate the profound impact architecture has on shaping the world we live in.

As you journey through this special issue, we invite you to delve into the compelling stories behind each design, appreciating the artistry, craftsmanship, and innovation that go into creating these architectural marvels. Discover the thought processes and inspirations of the architects and design studios that shape our built environment, transforming ideas into tangible realities. Through their stories, gain a new perspective on how architecture can profoundly influence our lives—enhancing our living spaces, fostering community, and promoting sustainability.



# Contents

## Advertising Sales :

Olwin D'souza  
Alisha Basu

All Rights Reserved © 2009 Forbes LLC,  
as to material published in the edition of  
Forbes Asia. All Rights Reserved.

DISCLAIMER: The views and opinions expressed  
in this supplement are not endorsed by  
Network 18 Media and Investments Limited.  
This is a marketing initiative and Forbes India  
journalists were not involved in producing this  
supplement.

Designed By:  
 GV Multimedia  
gvmultimedia.in



07

**Sameep Padora**  
Sameep Padora and Associates  
(sP+a)



08

**Gauri Khan**  
Gauri Khan Designs



09

**Amit Porwal**  
Icon Projects Inspace  
Pvt Ltd (IPIPL)



10

**Ankit Patel and  
Ankura Patel**  
ANA Designs



11

**Pratik Sidhpura and  
Devang Patel**  
P&D Associates



12

**Amit Maitra and Kallol Baroi**  
AK Enterprises



13

**Gopaal Zaverii**  
GZ1904



14

**Divyakant Mistry**  
Divyakant Mistry Associates  
(DMA)



**Vasundhara Sampath**  
Phylosophy Design Studio

15



**Harshिता Poddar**  
Harshिता Poddar and Associates

16



**Rajdip Sinha**  
Decor Lab

17



**Tejasee Prabhu and Janhavi Damania**  
Pink Octopus by T&J

18



**RIYA BAMBHANIYA JAIN**  
MAKER STUDIO

19



**Sanchi Kapur and Shivang Verma**  
Mass: Void Architects

20



**Shera Bano Merchant**  
1Square Designs

21



**Sunil Gambani**  
Drishti Architects

22



**Anirban Bhaduri and Sanjay Mondal**  
INNATE

23



**Neeta Kumar**  
Inhabit Design Studio

24



**Lopa Nagda and Heemanshu Nagda**  
EPSILON

25



**Aniruddh Deshpande**  
Shubhlaxmee Architects and Interior Designers

26





# Sameep Padora: Architect, Author, and Visionary Shaping India's Urban Landscape

of urbanization and affordable housing in India. Through his not-for-profit organization, sPare, he conducts extensive research on these critical issues. Padora's publications, such as "In the Name of Housing," "How to Build an Indian House," and "(de) Coding Mumbai," delve into the challenges and potential solutions for providing affordable housing in Indian cities.

Padora's research is not just theoretical; it is grounded in practical applications that inform his architectural practice. By exploring innovative construction techniques, sustainable materials, and community-driven design processes, Padora aims to develop affordable housing solutions that are both scalable and contextually relevant. His work with sPare has influenced policy discussions and inspired other architects and urban planners to rethink traditional approaches to housing and urban development.

## Collaborative Efforts and Educational Leadership

Padora's dedication to shaping India's urban landscape extends beyond his architectural practice. He is a founding member of the Bandra Collective, a group of six architects committed to designing public spaces in Mumbai. The Bandra Collective's projects, such as the redesign of Bandra Station and the creation of public parks and plazas, demonstrate the power of collaborative design in addressing urban challenges and enhancing the public realm.

Padora's commitment to education is evident through his service on academic boards at various institutions and his current role as the Dean of the Faculty of Architecture at CEPT University. In this capacity, he influences the next generation of architects by promoting a curriculum that emphasizes critical thinking, social responsibility, and innovative design practices.

## A Visionary Approach to Architecture

Sameep Padora's architectural philosophy is rooted in his belief that beauty alone is not enough to improve people's lives. He aims to create spaces that offer transformative experiences while addressing the needs of a wide demographic, including the underprivileged. Padora's buildings are characterized by a fusion of vernacular and contemporary sensibilities, showcasing his ability to adapt to local contexts while pushing the boundaries of design.

One of Padora's notable projects is the Design Workshop at CEPT University, which serves as a model for sustainable and context-sensitive architecture. The building incorporates passive cooling techniques, locally sourced materials, and flexible spaces that can adapt to various functions.

**S**ameep Padora's innovative designs, groundbreaking urban research, and commitment to education are transforming India's architectural landscape and addressing critical issues in affordable housing and sustainable development.

Sameep Padora, the founder of Mumbai-based Sameep Padora and Associates (sP+a), is a trailblazing architect and author whose work has garnered international acclaim. Born in Chamba, Northern India, Padora pursued his passion for architecture, graduating from the GSD at Harvard University before establishing his practice in 2007.

Padora's approach to architecture is holistic, considering not just the form and function of buildings but also their social, cultural, and environmental impacts. This philosophy is evident in his diverse portfolio, which includes public buildings, residential projects, and commercial spaces.

## sP+a's Architectural Achievements

sP+a's architectural achievements under Sameep Padora have been recognized with prestigious awards, including the Wallpaper Design Award for Best Public Building, the Beazley Architecture Prize, the Wienerberger Brick Award, and the Archdaily Building of The Year 2019. Padora's projects have also been honored with the Wallpaper Design Award for House of the Year, the Architectural Review's Emerging Architecture, and the AR Library Commendation Awards. These accolades highlight the innovative and impactful nature of sP+a's work, which combines aesthetic excellence with functional and sustainable design principles.

## Redefining Affordable Housing and Urban Research

Beyond his architectural prowess, Sameep Padora is deeply committed to addressing the complexities





Gauri Khan

**E**mbrace a world of grandeur and sophistication with the exclusive Lodha Park residence, where Lodha Group and Gauri Khan redefine luxury living in South Mumbai.

Luxury, comfort, grandeur. These three words perfectly encapsulate the essence of both The Lodha Group and the renowned designer Gauri Khan. When these two icons intersect, the result is nothing short of spectacular. The esteemed Lodha Group, celebrated for offering unparalleled indulgence in luxury living, has joined forces with Gauri Khan to create an exclusive grand designer residence at Lodha Park in Worli.

### The Essence of Gauri Khan's Design Philosophy

For the first time in South Mumbai, Gauri Khan has crafted a living space that reflects her signature style of contemporary and refined elegance. Known for her keen eye for detail and an innate sense of aesthetics, Gauri Khan's designs seamlessly blend opulence with functionality. Her vision for the Lodha Park residence is to create a sanctuary of luxury that is both timeless and innovative. Every element, from the choice of materials to the intricate detailing, speaks to her commitment to creating a space that is not just beautiful, but also profoundly personal and inviting. From custom-designed furniture to curated artwork, every corner of the residence is a testament to Gauri Khan's dedication to excellence and artistry.

### A Symphony of Luxury and Comfort

The exclusive designer home at Lodha Park is a testament to the perfect harmony of luxury and comfort. It is designed to offer an unparalleled

# A New Pinnacle of Luxury: Lodha Group and Gauri Khan's Grand Collaboration

living experience that caters to the desires of modern-day luxury connoisseurs. This residence is not just a place to live; it is a statement of sophistication and style. State-of-the-art amenities, including a private cinema, a wellness spa, and a rooftop infinity pool, elevate the living experience to new heights of luxury.

### Elevating Mumbai's Skyline

Mumbai's skyline, already known for its stunning architecture, has been further elevated with the addition of this remarkable residence. Lodha Group's commitment to excellence and Gauri Khan's design prowess have culminated in a project that stands out for its architectural brilliance and aesthetic appeal. The residence at Lodha Park is set to become a landmark, symbolizing the pinnacle of luxury living in South Mumbai. It is a place where the art of fine living is celebrated, and where residents can indulge in the finest comforts and conveniences. The strategic location in Worli also offers unparalleled connectivity to major business hubs, cultural centers, and upscale shopping districts, making it a coveted address for the elite.

### A New Standard in Luxury Living

The collaboration between Lodha Group and Gauri Khan represents more than just a new residence; it signifies a new standard in luxury living. This grand designer home is poised to redefine what it means to live luxuriously in Mumbai. It offers a lifestyle that is exclusive, elegant, and extraordinary. For those who seek the very best, this residence provides an opportunity to experience a world of opulence and grandeur that is unmatched. The Lodha Park residence is not just a home; it is a testament to the art of luxurious living, crafted with passion and precision. Future residents can expect unparalleled service, privacy, and a sense of community that is unique to this prestigious address.

The Lodha Group and Gauri Khan's collaboration for the exclusive designer residence at Lodha Park is a magnificent addition to Mumbai's luxury real estate scene. It embodies the perfect blend of luxury, comfort, and grandeur, setting a new benchmark for sophisticated living in the heart of South Mumbai. With its exquisite design, world-class amenities, and prime location, this residence is destined to be a coveted sanctuary for those who appreciate the finer things in life.







Amit Porwal

**A**mit Porwal transforms spaces with innovative, luxury designs, evolving from Mumbai's heart to a global stage, while leading Icon Projects Inspace Pvt Ltd with passion, creativity, and unwavering dedication to excellence.

Imagine a world where buildings aren't just bricks and mortar, but sculptures of space that shape our lives. Architecture is this captivating art, weaving together functionality and beauty. From soaring skyscrapers to cozy homes, architects are storytellers, crafting environments that tell the tale of human experience. It's a symphony of creativity, engineering, and history, shaping not just our surroundings, but also our emotions and interactions with the world.

Amit Porwal, the creative virtuoso behind Icon Projects Inspace Pvt Ltd (IPIPL), is a name synonymous with innovative design and transformative spaces. His story is one of passion and evolution, beginning nearly two decades ago in the vibrant and bustling city of Mumbai. What started as a dream has blossomed into a design empire that redefines the boundaries of luxury and functionality. Porwal's career is not just about crafting beautiful interiors; it's about creating environments that resonate deeply with the people who inhabit them.

#### A Visionary with a Unique Approach

Amit Porwal is more than just a designer—he is a visionary who sees beyond the surface of a project. His approach to design is rooted in a deep understanding of his clients' unique narratives and aspirations. Porwal believes that every space has a story waiting to be told, and it is his mission to uncover and enhance

# The Art of Design Mastery: Amit Porwal and Icon Projects Inspace Pvt Ltd

these stories through his work. His design philosophy revolves around versatility and creativity, where each project is treated as a new adventure.

#### Expanding Horizons: From Mumbai to Dubai and Beyond

As the founder of IPIPL, Amit Porwal has built a team of talented professionals who share his passion for exceptional design. Under his guidance, IPIPL has grown from a local design firm into a global player in the world of interiors. Recent successes in Dubai mark the beginning of a new chapter in Porwal's career, one that looks beyond Indian borders to explore exciting opportunities in Africa and beyond.

This expansion is not just about growth but about embracing new challenges and bringing a touch of Mumbai's creative energy to new markets. As he progresses beyond two decades of design excellence, Porwal is set on defining modern luxury living on the global stage, continuing to expand his influence and vision internationally. His vision is to showcase his unique design sensibility to a broader audience, bringing his signature blend of elegance and innovation to international clients.

#### A Legacy of Awards and Recognition

Amit Porwal's impressive list of accolades is a testament to his dedication and talent. He has been honored with prestigious awards such as The Ace of Space 2023, The D/List, Smart Space Award, FOAID, and Grohe India Bath Design Awards. These awards recognize not just the quality of his work but also the impact he has made in the design world.

Yet, despite his success, Porwal remains grounded and focused on what truly matters: his team and his clients. The dynamic team at IPIPL is a reflection of Porwal's own approach to design—combining youthful enthusiasm with seasoned expertise to deliver exceptional results.

#### Crafting Inspiring and Endless Possibilities

Amit Porwal's unique ability to transform spaces into environments that inspire, comfort, and impress sets him apart. His meticulous designs, from bespoke furniture to luxurious interiors, aim to enhance the human experience. As Porwal celebrates two decades in the design industry, he reflects on a career of creativity, innovation, and success. Yet, this is just the beginning for him. With plans to explore new markets and push design boundaries, the future holds exciting possibilities.





Ankur Patel and Ankura Patel

**A**NA Designs, a pioneer in commercial and corporate interiors, masterfully blends art and innovation to create transformative spaces, driven by two decades of excellence, diverse expertise, and industry accolades.

The field of interior design plays a crucial role in shaping the environments where we work, live, and interact, influencing functionality, aesthetics, and overall well-being. In the commercial and corporate interiors realm, creating spaces that inspire creativity and efficiency is paramount. ANA Designs excels in this arena, blending innovation with a steadfast design vision. With a meticulous mix of art, artifacts, and illustrative graphic designs, they create design landscapes that foster creativity and functionality.

### The Visionaries Behind ANA Designs

ANA Designs thrives due to the complementary strengths of its founders, Ankura Patel and Ankur Patel. Ankura Patel, a CEPT University alumna, is the creative force with a global perspective and meticulous design skills, driving the company's innovative projects. Ankur Patel, an MBA graduate from the United States, handles the business side, leveraging his IT and corporate experience to ensure strategic growth and operational success. Together, their blend of creative vision and business expertise underpins the success of ANA Designs.

### Diverse Expertise and a Journey of Excellence

With over 20 years in the industry and more than 1200 projects completed, ANA Designs has established an impressive track record, achieving a turnover of over 25 million dollars. This success underscores their expertise and commitment to delivering top-notch

# ANA Designs: Blending Artistry with Interior Design

design and build services. Their strong foothold spans various business verticals, including banking and finance, insurance, IT/ITEs, pharma and healthcare, labs, engineering, manufacturing, education, telecom, media, legal, and retail. ANA Designs' ability to co-create spaces in collaboration with clients from diverse industries showcases their versatility and dedication to providing tailored solutions that meet specific organizational needs. From inception to completion, ANA Designs ensures every project not only exemplifies their clients' goals but also elevates their vision into reality, empowering them to evolve, succeed, and achieve lasting success.

### Driven by Innovation and Sustainability

Innovation and sustainability are at the core of ANA Designs' philosophy. As a proud member of the Indian Green Building Council (IGBC), they embed sustainable end-to-end solutions in their projects. Their progressive, quality-oriented, cost-effective, and technically robust approach ensures that every project is not only visually appealing but also environmentally responsible. From distinctive design solutions to styling and branding, ANA Designs covers all aspects of design under one roof.

### Celebrating Prestigious Achievements

ANA Designs has received numerous prestigious awards over the years. In 2007, they won the CNBC Awaaz CRISIL Real Estate Awards for Best Interior Designer for Commercial Spaces. In 2018, they were recognized with the Society Interiors Design Competition & Awards for Creative Excellence in Architecture & Interior Design, the CWAB Noteworthy Project 2018, and the Festival of Architecture & Interior Designing 2018 Mumbai Edition (FOAID) for Excellence in Architecture & Design, along with the Interior Fit Out Project October 2018 for Jacobs Vadodara.

In 2023, ANA Designs received the ICE India Expo Society Interiors Design Competition & Awards for Outstanding Contribution to Innovative Architecture and Interior Design, and Ankura Patel was honored with the Mentor Award. In 2024, they won the iDaac Infinity Awards for Commercial Interiors and the Certification of HSE Appreciation for the TCS Anchor Project for one million man-hours without a lost time incident.

### Pioneering the Future of Design and Build

In a competitive industry, ANA Designs has established itself as a true pioneer, consistently raising the bar and redefining what is possible in design and build. Their human-centric design processes, collaborative approach, and ever-evolving team contribute to their success and reputation as leaders in the field. ANA Designs continues to weave art into spaces, creating environments that inspire and transform.







Pratik Sidhpura and Devang Patel

**I**nfusing energy and contemporary flair, P&D Associates offers bespoke architectural and interior design solutions that blend global trends with localized sensibilities to create captivating, art-like compositions.

Established in 2009 by Pratik Sidhpura and Devang Patel, P&D Associates has quickly emerged as a leading design consultancy in Bharuch. The firm, renowned for its vibrant and contemporary approach, is dedicated to providing bespoke architecture and interior design solutions that cater to the unique aspirations and style preferences of each client.

### Design Philosophy

P&D Associates believes in the power of color to set the mood and transform spaces. Their design philosophy emphasizes vibrant hues and meticulous combinations of materials and surfaces to create compositions that resemble works of art. This approach is evident across their diverse portfolio, which includes corporate spaces and residential projects of varying scales. Their designs are not just about aesthetics but also about creating an emotional impact, making spaces lively and inviting.

### Commitment to Client Aspirations

The firm's vision for each project is firmly anchored in the aspirations of their clients. By integrating client desires with their own design dictates, P&D Associates ensures that every project is a true reflection of individual style preferences. This personalized approach has earned them a stellar reputation in the region in less than a decade. Whether it's a sleek corporate office or a cozy home, P&D Associates tailors each design to meet the specific needs and dreams of their clients, resulting in highly personalized and effective spaces.

### Merging Global Trends with Local Sensibilities

P&D Associates is committed to bringing the best global trends to Bharuch while infusing them with

# P&D Associates: Redefining Design with Vibrancy and Flair

localized interpretations. Their innovative designs set new standards in fashion, lifestyle, and design in the region. The firm's ability to blend international influences with local flavors is reflected in their varied and dynamic body of work. This unique approach not only enhances the aesthetic appeal of their projects but also ensures they are culturally relevant and sustainable. By understanding the local context and integrating it with global design trends, P&D Associates creates spaces that are both contemporary and timeless.

### Notable Projects and Publications

P&D Associates has been featured in several prestigious publications, highlighting their exceptional work. Some notable mentions include:

- ◆ The Design Bridge (Online Application): Featured in the segment "Fragment of Spaces" for the Ravi Shetty Residence in Ankleshwar (September 16).
- ◆ The Architect's Diary: Highlighted the Ravi Shetty Residence in Ankleshwar (September 26).
- ◆ Timeless Interiors: Essay by Dipen Gada featuring Mr. Pillai Bhai's Apartment in Surat (June 28).
- ◆ Building Indonesia (International Web Portal): Featured Hair Saint in Bharuch (November 4, 2019).
- ◆ Casariccaexpo (International Web Portal): Highlighted the Ravi Shetty Residence in Ankleshwar (November 12, 2019).
- ◆ Better Interiors (Magazine Publication): Featured Hair Saint in Bharuch (December 4, 2019).

### Pioneering the Design Horizon in Bharuch

P&D Associates' commitment to innovation and excellence has positioned them as pioneers in Bharuch's design landscape. Their work sets trends and pushes the boundaries of conventional design practices, making them a beacon of modern architecture and interior design in the region. By continuously exploring new materials, techniques, and design concepts, P&D Associates remains at the forefront of the industry, inspiring other designers and evolving design standards.

Their dedication to client aspirations, sustainable practices, and the artful use of color ensures that every project is unique and impactful. With a deep understanding of the emotional and functional aspects of spaces, P&D Associates creates environments that are both visually stunning and deeply meaningful for their clients.





Amit Maitra and Kallol Baroi

**A**K Enterprises, led by visionary designer duo Amit Maitra and Kallol Baroi, blends creative excellence with technical expertise, earning accolades and transforming spaces with innovative, sustainable designs in Kolkata and beyond.

Founded on April 7th, 2005, AK Enterprises stands as a testament to the power of collaboration and expertise. The brainchild of dynamic professionals Amit Maitra and Kallol Baroi, this Kolkata-based architectural firm embodies a vision centered on harnessing individual strengths for collective advancement. Specializing in Architectural Interior design and execution, AK Enterprises offers comprehensive services including Design, Turnkey Solutions, and Project Management. The firm has steadily evolved over the years, assembling a core team of professionals with diverse backgrounds in Architectural Interior, Civil Engineering, Facility Management, and Project Management. This cohesive and driven team is committed to delivering bespoke solutions aligned with the latest industry standards and trends, catering to the distinct needs of valued clients.

### Meet the Principals

**Amit Maitra:** An artist by instinct and a designer by training, Amit Maitra embarked on his professional journey in 1995. His inherent skill of visualization, coupled with his acquired ability to transform concepts into reality, makes him a versatile designer capable of taking on any challenge. Under Amit's able guidance, the team of designers at AK Enterprises spearheads the creative aspects of the projects, ensuring each endeavor is infused with innovation and aesthetic excellence.

# AK Enterprises: Pioneering Architectural Excellence in Kolkata

**Kallol Baroi:** Graduating in Civil Engineering in 1989, Kallol Baroi spent considerable time in construction before developing an affinity for the architectural and interior domains. His extensive experience in project management and corporate affairs complements his technical expertise, proving invaluable in the successful undertaking and execution of projects. Together, Amit and Kallol form a formidable partnership that drives AK Enterprises towards new heights of architectural excellence.

### Philosophy and Approach

The philosophy of AK Enterprises is encapsulated in the mantra: "By improving service standards yesterday to match the expectations of tomorrow, today, consistently and without fail." This guiding principle reflects the firm's commitment to continuous improvement and client satisfaction. From layout planning to project execution, AK Enterprises handles every aspect of a project, including design, detailing, and graphics. The firm operates from a highly systematic and computerized office environment, ensuring continuous upgrading of software relevant to its core business operations. This approach not only enhances efficiency but also ensures that the firm remains at the cutting edge of industry developments.

### Media Recognition and Achievements

AK Enterprises' unwavering commitment to excellence has garnered significant recognition in the architectural world. The firm's innovative designs and impactful projects have been showcased in several prestigious publications, underscoring its remarkable talent and achievements. Highlights of this acclaim include being named in Good Homes' Top 15 in July 2024 and Architecture + Design Magazine's Top 50 in May 2024. AK Enterprises also earned a prominent feature in LIVIN SPACES International, graced the pages of Elle Décor Artful Abodes, and was featured in Architectural and Builders Magazine in December 2023 and Interior and Décor Magazine in July 2023. Additionally, the firm was celebrated as one of the Top 40 Architects of India in the 40th Anniversary Issue of Architecture + Design Magazine. These accolades reflect AK Enterprises' exceptional talent and its steadfast dedication to quality and innovation, solidifying its position as a leader in the architectural landscape of Kolkata and beyond.

### Looking Ahead

As AK Enterprises continues to grow and evolve, the firm remains steadfast in its commitment to delivering top-notch architectural solutions. By blending creativity with practicality and maintaining a keen focus on client satisfaction, Amit Maitra and Kallol Baroi lead their team in pushing the boundaries of design and execution. Their shared vision and unwavering dedication ensure that AK Enterprises will continue to shape the architectural landscape for years to come, setting new standards of excellence.



Studio SP Photography





**Gopaal Zaverii**

**I**n a world of fleeting design trends, GZ1904, led by visionary architect Gopaal Zaverii, crafts timeless, emotionally resonant spaces that redefine luxury and stand as a testament to design excellence.

In a world where design trends come and go like fleeting fashions, one architectural firm has carved a distinct niche for itself: GZ1904. Established in 2012 with a resolute vision of becoming the industry's most coveted design-centric practice, GZ1904 has consistently delivered projects that transcend fleeting trends and geographical limitations, solidifying their position as a true design powerhouse.

### **The Visionary Behind the Success: Gopaal Zaverii**

The driving force behind GZ1904's remarkable trajectory is Gopaal Zaverii, an architect with over 20 years of experience. Equipped with a solid foundation in architecture from Mumbai University, Gopaal has meticulously honed his skills across a diverse range of projects. His expertise encompasses townships, master planning, high-end residences, and retail spaces.

### **Elevating Design Excellence: A Relentless Pursuit**

GZ1904's philosophy is built upon a single, unwavering pillar: the relentless pursuit of design perfection. Gopaal and his team firmly believe that in today's globalized world, their clientele deserves nothing less than world-class design solutions. Catering to a discerning group of High Net Worth Individuals (HNIs) and Super HNIs who have

# **Timeless Elegance: The Architectural Brilliance of Gopaal Zaverii with GZ1904**

experienced the best the world has to offer, GZ1904 is perpetually committed to exceeding expectations with every project they undertake.

Gopaal's design approach is deeply personal, drawing inspiration from his inherent emotional and artistic sensibilities. A perfectionist at heart, he meticulously delves into understanding the client's desires and aspirations. Every design that bears the GZ1904 hallmark is a testament to his unwavering dedication, emerging as a timeless masterpiece that stands the test of time.

### **Bridging the Generational Divide: A Fusion of Inspirations**

At GZ1904, the boundaries of art and architecture dissolve. Geographical limitations and conventional design trends hold no sway over their creative vision. The firm's polished approach and sophisticated working style allow them to seamlessly weave inspiration from diverse sources, resulting in iconic designs that resonate deeply with the unique personalities of their clients.

Gopaal's design philosophy is rooted in the belief that true design mastery lies in achieving the perfect balance and proportion when drawing from various sources of inspiration. By doing so, GZ1904 bridges the gap between generational preferences, crafting designs that resonate with the hearts and minds of clients across all age groups.

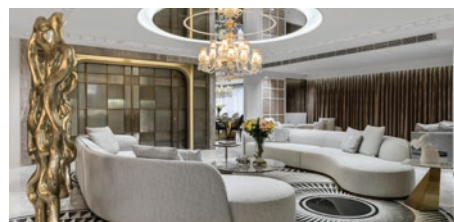
### **Transparency and Precision: The GZ1904 Hallmark**

Building lasting relationships is paramount at GZ1904. The firm recognizes that successful project execution hinges on transparency. They maintain a refreshingly open-book policy, strictly adhering to the virtues of honesty and integrity in all their client interactions. This commitment fosters trust and allows for a collaborative environment where ideas can flourish.

Furthermore, the GZ1904 team takes immense pride in their meticulous approach, ensuring precision from the ground level upwards. Their extensive experience, encompassing every stage of a project from the initial design stages to the final execution, equips them with the skills and expertise to troubleshoot any challenge and achieve the best possible results. The firm's unwavering commitment to continuous learning and implementation of cutting-edge techniques ensures that each project surpasses the brilliance of the one before it.

### **Elevating Luxury Through Emotional Connections**

"Connecting emotions to luxury through WOW designs and serving clients beyond expectations" is the guiding principle that propels GZ1904 forward. Deeply inspired by the success stories of their clients, the firm places immense value on every investment made, ensuring that each design delivers exceptional value and maximizes the client's budget.





**Divyakant Mistry**

**D**ivyakant Mistry Associates (DMA) is a leading force in luxury and innovative interior design, transforming spaces with exceptional craftsmanship and a 29-year legacy of excellence.

Divyakant Mistry Associates (DMA) is not just an interior design firm; it is a beacon of luxury, innovation, and meticulous craftsmanship in the industry. With an impressive 29-year legacy, DMA has firmly established itself as a paragon of excellence in the field of luxury interior design. The firm's unwavering commitment to delivering unparalleled quality has garnered it significant acclaim, including notable mentions in Architecture Plus Design's "Top 40" in their 40th-anniversary edition and being named among "India's Top 10 Men Architects & Designers in 2022" by India Today magazine. Furthermore, DMA has been honored with the prestigious "National Award Global India Business Forum," presented by the Governor of Andhra Pradesh, Mr. Biswabhusan Harishchandra, recognizing its remarkable contributions to the interior design landscape.

### **The Visionary Behind DMA**

At the helm of Divyakant Mistry Associates is the visionary Principal Designer, Divyakant Mistry. Under his leadership, the firm has successfully transformed numerous concepts into tangible experiences, delivering exceptional outcomes across various commercial and upscale residential interior projects. Mistry's design style is characterized by a harmonious blend of materials, the strategic use of

# **Elevating Spaces: The Visionary Journey of Divyakant Mistry Associates**

technology, and a minimalist sensibility that is inviting rather than austere. His approach ensures that every project is not only aesthetically stunning but also functionally efficient.

Divyakant Mistry's philosophy revolves around building trust with clients and finalizing the conceptual plan, believing that everything else naturally falls into place thereafter. His primary focus involves actively engaging in both practical projects and research endeavors simultaneously, ensuring that DMA stays at the forefront of industry trends and innovations.

### **Crafting Timeless Elegance**

At DMA, the essence of their work lies in creating captivating interior spaces that seamlessly blend comfort with sophistication. The firm's expertise spans a diverse range of aesthetic preferences, from contemporary to classic and modern styles. Specializing in high-end residential, commercial, and hospitality interiors, DMA is renowned for its innovative design approach that harmonizes style and luxury with comfort.

Every project undertaken by DMA is a testament to meticulous planning and execution, resulting in functional and aesthetically pleasing environments. The team at DMA works closely with clients, encapsulating their unique identities in each project. This personalized approach ensures that every space, whether a luxurious restaurant, an opulent villa, or a sleek corporate office, is transformed into a distinctive work of art.

### **Transformative Design Solutions**

DMA's portfolio features contemporary, classic, and modern design styles, delivering unique and beautifully executed solutions. Each project combines found objects, materials, accessories, and furniture crafted to the highest international standards. The firm's excellence is evident in its comprehensive services, from conceptual planning to full execution. With a dedicated team under one roof, DMA ensures a seamless and transformative journey for clients, making it a top choice for luxurious interior design projects.

### **A Commitment to Excellence**

With over 29 years of experience in executing challenging projects, DMA has honed its expertise in managing each project uniquely. The firm's extensive experience spans various sectors, including hospitality projects like hotels and restaurants, as well as commercial, residential, and retail projects. This diverse portfolio demonstrates DMA's ability to adapt and innovate, delivering exceptional results that consistently exceed client expectations.







Vasundhara Sampath

**P**hylosophy Design Studio, led by Principal Designer Vasundhara Sampath, transforms spaces with culturally inspired, meticulously crafted designs, creating unique, personalized environments that resonate globally.

Welcome to Phylosophy Design Studio, a Hyderabad-based firm helmed by the visionary Principal Designer Vasundhara Sampath. Since beginning her creative journey in 2009, Vasundhara has brought a unique perspective to the design world, heavily influenced by her passion for travel. Her exposure to various cultures, colors, and tastes infuses her designs with a richness that sets her apart. Each project becomes a canvas where diverse elements are skillfully blended to create distinct and captivating spaces.

#### Diverse and Impactful Portfolio

Phylosophy Design Studio has made a significant impact on residential and commercial spaces across India, the US, and the UK. The studio's diverse portfolio includes luxury residences, hospitals, clinics, offices, and retail spaces. This versatility showcases the team's expertise and adaptability in handling different design challenges. Whether it's a serene home, a functional medical facility, or a dynamic office, Phylosophy Design Studio excels in delivering spaces that meet and exceed client expectations.

#### Seamless Integration of Architecture and Interiors

At Phylosophy Design Studio, the belief in seamlessly integrating architecture and interiors is

## Phylosophy Design Studio: A Journey of Cultural Inspiration and Design Excellence

fundamental. From the initial concept to pre-construction, the team collaborates closely with each client, ensuring that every detail is meticulously planned and executed. This holistic approach prioritizes clear communication and innovative design thinking, resulting in cohesive and personalized spaces. Vasundhara's team is dedicated to understanding and translating the client's vision into reality, crafting environments that are both functional and aesthetically pleasing.

#### Commitment to Craftsmanship and Client Satisfaction

Having successfully completed over 400 projects worldwide, Phylosophy Design Studio's commitment to craftsmanship and client satisfaction is evident. The firm prides itself on delivering high-quality results, whether creating a tranquil residential haven or a vibrant commercial environment. Every project reflects the studio's dedication to excellence and precision. This unwavering commitment ensures that each space not only meets but often surpasses client expectations, fostering lasting relationships built on trust and satisfaction.

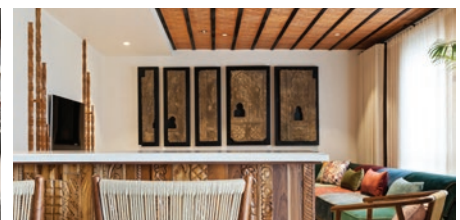
#### Transforming Visions into Reality

Phylosophy Design Studio's approach is rooted in a deep understanding of the emotional and functional aspects of spaces. By focusing on innovative design solutions and maintaining an open dialogue with clients, the team transforms visions into reality. Each project is a testament to the studio's ability to create environments that are visually stunning and deeply meaningful. The integration of global design trends with local sensibilities results in spaces that are unique, impactful, and perfectly tailored to the client's needs.

#### A Legacy of Excellence

Phylosophy Design Studio stands out not only for its innovative designs but also for its consistent delivery of excellence. Vasundhara Sampath's leadership and the team's dedication to pushing design boundaries have cemented the studio's reputation as a leader in the industry. The firm's success is a reflection of its core values: a passion for design, a commitment to quality, and a deep respect for client aspirations. By continuously exploring new materials, techniques, and design concepts, Phylosophy Design Studio remains at the forefront of the industry, inspiring other designers and contributing to the evolution of design standards globally.

Phylosophy Design Studio, under the guidance of Vasundhara Sampath, has redefined the landscape of modern architecture and interior design. The firm's culturally inspired, meticulously crafted designs create unique, personalized environments that resonate with clients worldwide.





Harshिता Poddar

**I**n the heart of Kolkata, Harshिता Poddar's designs fuse timeless elegance with contemporary innovation, creating exquisite, meaningful spaces that reflect personal style and inspire everyday luxury.

In the heart of Kolkata's dynamic design scene, Harshिता Poddar stands as a true visionary, celebrated for her exceptional ability to craft luxurious and meaningful spaces. As the founder of Harshिता Poddar and Associates, Harshिता has devoted herself to creating environments that transcend mere functionality, aiming instead to design personal sanctuaries that reflect and enhance the lives of their inhabitants.

Harshिता's design philosophy is rooted in a profound appreciation for classical art and architecture. Raised in a culture where the beauty of tradition is seamlessly woven into everyday life, she developed a vision that marries the elegance of the past with the vibrancy of the present. Her designs are a testament to her belief that architecture and interior design can be both exquisite and practical, creating spaces that are not only aesthetically stunning but also deeply personal and inviting.

#### **The Essence of Harshिता Poddar and Associates**

Harshिता Poddar and Associates is more than a design firm; it is a sanctuary of creativity where timeless luxury meets modern sophistication. With over 15 years of experience in the industry, the firm has established a stellar reputation for delivering sophisticated interiors that captivate and inspire.

At the heart of the firm's success is a dedication to transforming spaces through inspired design. Each project undertaken by Harshिता Poddar and Associates is a meticulous exploration of how traditional principles can be reinterpreted to suit

## Harshिता Poddar and Associates: Where Tradition Meets Innovation in Luxury Design

contemporary needs. Whether working on private residences or prestigious commercial developments, the team's goal is to create environments that are both stunning and highly functional.

#### **A Commitment to Timeless Luxury**

At Harshिता Poddar and Associates, the creation of luxury is not merely about opulence; it is about crafting spaces that offer both beauty and lasting appeal. The firm's approach to design is defined by a commitment to creating interiors that are as timeless as they are sophisticated.

The firm's attention to detail is evident in every aspect of their work, from the careful selection of materials to the thoughtful arrangement of spaces. This meticulous approach ensures that every design is not only visually striking but also offers a sense of comfort and luxury that enhances the daily lives of those who experience it.

#### **Designing with a Personal Touch**

What sets Harshिता Poddar and Associates apart is their personalized approach to design. The firm's process begins with a deep engagement with each client, seeking to understand their unique aspirations and preferences. This client-centric approach is the foundation of Harshिता's design philosophy, which aims to exceed expectations and create spaces that are both innovative and deeply personal.

Harshिता's ability to translate her clients' visions into stunning realities is a testament to her expertise and creativity. Her approach goes beyond traditional design practices, focusing on creating environments that reflect the individual character of each client. This dedication to crafting bespoke designs ensures that every project is a true reflection of the client's lifestyle and desires, resulting in spaces that are as unique as they are beautiful.

#### **A Legacy of Excellence in Interior Design**

As Harshिता Poddar and Associates continues to grow and evolve, their focus remains on creating spaces that are both luxurious and meaningful. Harshिता Poddar's vision for her firm is clear: to craft environments that offer not only visual beauty but also a profound sense of personal connection.

With a legacy built on creativity, craftsmanship, and a commitment to excellence, Harshिता Poddar and Associates stands as a beacon of luxury design in Kolkata and beyond. Each project is a celebration of their ability to transform spaces into personal sanctuaries, offering clients a unique blend of sophistication, functionality, and enduring elegance.







Rajdip Sinha

**R**ajdip Sinha's journey from esteemed academic achievements to transforming Decor Lab into a leading architectural powerhouse highlights his innovative approach, blending functionality with creativity to redefine design excellence.

Architecture has long been a field that captivates the imagination, pushing the boundaries of what is possible. It is a discipline that seamlessly blends art, science, and function, creating structures that not only shelter but also inspire. Rajdip Sinha, a rising star in the world of design, has embraced this challenge with open arms.

Rajdip's remarkable journey began with academic accolades, including a Bachelor of Architecture from Amity University Kolkata and specialisation in parametric architecture. These formative years laid the groundwork for his innovative approach to design, marked by a relentless drive to challenge conventional boundaries. Rajdip's early experiences set the stage for a career defined by creativity, excellence, and a steadfast determination to redefine the industry.

### Carrying Forward a Legacy

Decor Lab, a renowned design firm in Kolkata, has been a trailblazer in the industry since 1993. Founded by Rajdip's father, Mr. Raja Sinha, the firm began as a pioneering interior design studio. Rajdip joined the team as a co-founder approximately five years ago, bringing a fresh perspective and an unwavering ambition for growth. Under his visionary leadership, Decor Lab has undergone a remarkable transformation, evolving from a successful interior design practice into a flourishing architectural powerhouse.

# Redefining Design Excellence: The Visionary Journey of Rajdip Sinha and Decor Lab

Today, Decor Lab is celebrated for its unique blend of heritage and modernity. The firm has completed over 1,000 residential and commercial projects across India, each one a testament to their client-focused approach and their ability to create spaces that are both visually stunning and highly functional. With a dedicated team of 275 talented professionals, Decor Lab stands at the forefront of the design industry, renowned for its ability to craft environments that inspire and delight.

### Balancing Functionality and Creativity

Rajdip's design philosophy is anchored in the principle of "functionality first." He firmly believes that great design must prioritize usability and efficiency, ensuring that every element of a space serves a distinct purpose. Once the functional aspects are meticulously addressed, Rajdip infuses his designs with a captivating dose of creativity, crafting environments that not only meet practical needs but also exceed aesthetic expectations.

### Celebrated Projects and Accolades

During his tenure at Decor Lab, Rajdip has overseen a diverse range of projects, from luxurious residential homes to innovative commercial spaces. One standout project in his career was the design of a 2,350 sq ft home in Kolkata, which featured striking art installations and the use of cutting-edge materials. A highlight of this project was the creation of vibrant ombre-effect curtains that captured widespread attention and acclaim, marking a significant milestone in Rajdip's design journey.

Rajdip's exceptional work has not gone unnoticed. Decor Lab has been featured in prominent publications such as Elle Decor Magazine and Architecture Plus Design Magazine, recognized as one of the Young Icons of the design world. The firm has also received multiple prestigious awards, including the Blind Wink Indian Design Awards 2023 and the National Architecture and Interior Design Excellence Awards 2024.

### Envisioning the Future

As Rajdip Sinha continues to lead Decor Lab, the future looks exceptionally bright for this innovative firm. With a strong foundation built on tradition and a forward-thinking approach to design, Rajdip is poised to further elevate Decor Lab's reputation and influence within the architecture and design landscape. His unwavering commitment to blending functionality with creativity ensures that Decor Lab will remain a beacon of excellence in the industry for years to come, redefining the boundaries of design excellence.





Tejasee Prabhu and Janhavi Damania

**P**ink Octopus by T&J, founded by Tejasee Prabhu and Janhavi Damania, redefines luxury design with their personalized, client-focused approach, creating stunning spaces that truly resonate.

**P**ink Octopus by T&J is not just another design firm; it's a manifestation of a dream nurtured by Tejasee Prabhu and Janhavi Damania. This dynamic duo met during their college days and vowed to start a company together once they had established their individual careers. True to their promise, they launched Pink Octopus after gaining significant experience under various mentors and designers. The name "Pink Octopus" is symbolic, inspired by the octopus's representation in art and mythology as a powerful and multifaceted entity. For Tejasee and Janhavi, it signifies a female design powerhouse, radiating strength and creativity from a central core.

#### Client-Centric Design Philosophy

At the heart of Pink Octopus by T&J lies an unwavering commitment to client satisfaction. Their design process is meticulously client-oriented, ensuring that every home or brand space they create is a true reflection of the user's personality and aspirations. They go above and beyond to understand and incorporate the unique nuances and requirements of their clients, dedicating time to truly get to know each individual's preferences, lifestyle, and vision. By engaging in in-depth consultations and actively listening to their clients' needs, they ensure that every detail is meticulously planned and executed. This personalized approach guarantees that each

# Pink Octopus by T&J: Crafting Spaces with Elegance and Passion

project not only meets but exceeds expectations, resulting in spaces that are both aesthetically pleasing and deeply meaningful.

#### Humble Beginnings to Luxury Projects

The journey of Pink Octopus began with modest, budget-friendly projects that served as stepping stones in the firm's early years. These initial projects, though small in scale, were pivotal in shaping the company's foundation. Each project was approached with the same level of passion, creativity, and attention to detail that Pink Octopus is known for today. These early endeavors allowed the team to hone their skills, experiment with innovative ideas, and establish a reputation for delivering exceptional results within a limited budget.

As their portfolio grew and their distinctive style started gaining recognition, the firm's presence on social media also began to flourish. This increased visibility led to more significant opportunities, with clients seeking out Pink Octopus for their unique ability to blend functionality with aesthetic appeal. Today, Pink Octopus has carved out a niche for itself in both the residential and commercial sectors. Their projects now range from high-end residential homes to upscale commercial properties, each one a testament to their unwavering commitment to excellence and innovation.

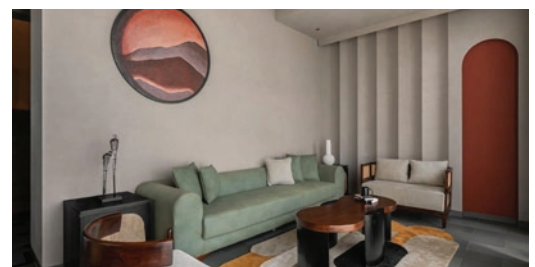
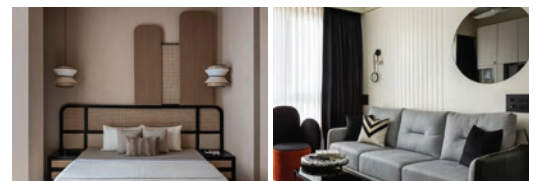
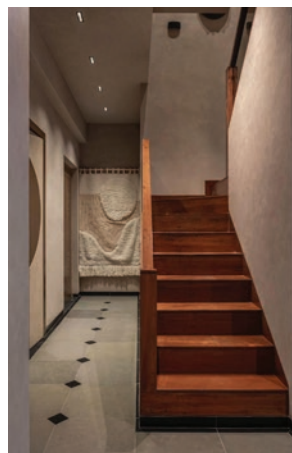
#### The Power of Social Media

In today's digital age, a robust social media presence is crucial for any business, and Pink Octopus by T&J has leveraged this platform to its fullest. Their stunning project showcases and behind-the-scenes glimpses into their design process have captivated audiences and garnered a loyal following. This online presence not only highlights their design capabilities but also provides a glimpse into the passion and dedication that Tejasee and Janhavi pour into each project. It's this authenticity that resonates with their audience and clients alike, driving the firm's growth and success.

#### Creating a Lasting Impact

What sets Pink Octopus apart is their ability to create spaces that leave a lasting impact. Each project is a testament to their creativity, attention to detail, and commitment to excellence. They understand that a well-designed space can enhance the quality of life, evoke emotions, and create lasting memories. Whether it's a cozy home or a sophisticated commercial space, Pink Octopus ensures that every project is a harmonious blend of aesthetics and functionality.

Tejasee Prabhu and Janhavi Damania have turned their college dream into a thriving design powerhouse, creating spaces that are not only beautiful but also deeply meaningful to those who inhabit them. Their journey from humble beginnings to luxury projects is a testament to their talent and tenacity, making Pink Octopus a name to watch in the design industry.







Riya Bambhaniya Jain

**R**iya Bambhaniya Jain, with over 14 years of visionary expertise, transforms spaces into art through Maker Studio, blending luxury, sustainability, and cultural finesse in every design.

In the dynamic world of interior design, where creativity meets functionality, Riya Bambhaniya Jain stands out as a beacon of innovation and elegance. With over 14 years of experience in reshaping residential and commercial landscapes across India, Riya's journey is defined by a relentless pursuit of perfection and a deep-seated passion for creating flawless design experiences.

### A Passionate Journey in Design

Riya's illustrious career began with a strong foundation—an interior design degree coupled with hands-on experience managing residential and commercial projects. Her extensive tenure in luxury interior design in India has been marked by a seamless fusion of global trends and local cultural influences. This unique blend not only distinguishes her work but also reflects her commitment to delivering bespoke designs that resonate with her clients' aspirations.

### Founder of Maker Studio: Pioneering Excellence

At the helm of Maker Studio, Riya Bambhaniya Jain has cemented her reputation as a pioneer in the realm of premium interior design. Established on principles of creativity, functionality, and aesthetic excellence, Maker Studio has become synonymous with transforming spaces into living works of art. Specializing in luxurious residences, opulent villas, and high-rise societies, the studio's portfolio bears

# Mastering Elegance: The Visionary Designs of Riya Bambhaniya Jain

testimony to Riya's ability to capture the essence of each client while pushing the boundaries of design innovation.

### Awards and Recognition: Celebrating Excellence

Riya Bambhaniya Jain's contributions to interior design have garnered numerous accolades, including the IBMA Iconic Brands Maharashtra Awards 2023 for Best Interior Designer Firm, Creative & Entrepreneurial Excellence in Interior & Residential Designer in Mumbai at the India Design Awards 2023, and recognition as Women Entrepreneur of Maharashtra 2022. She was also honored as a Business Transformation Leader 2022 by The Economic Times & Times Inter Act, and Maker Studio received acclaim as the Best Interior Design Firm 2022 from MID DAY. Riya was named Most Promising Interior Design Consultant Firm of the Year 2021 by Business Mint Nationwide Architecture & Interiors Awards and the Fastest Growing Interior Design Company of the Year 2021 at the International Brilliance Awards. She was also recognized as the Most Creative Interior Design Brand of the Year 2021 by Designs & Stories Magazine, and one of the Top 25 Most Creative & Trendsetter Women Interior Designer of the Year 2021 by the same publication. Maker Studio's excellence was highlighted at the Interior Design Excellence Awards 2021 by Designs & Stories National Architecture & Interiors Awards, and Riya received the Youngest Business Women of the Year 2021 award at the Forever Star Awards FSI 2021.

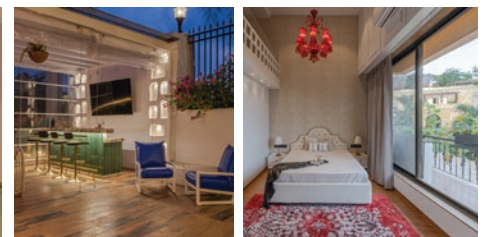
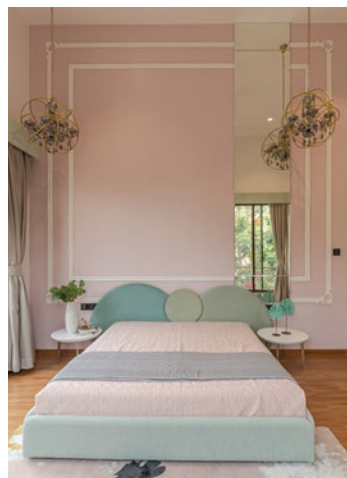
Her role as a jury member at esteemed events such as the Idea Design Excellence Awards and ACETECH Exhibition underscores her influence and expertise within the industry. Riya's insights and expertise have also been sought after at notable panels and discussions, further solidifying her reputation as a thought leader in contemporary interior design.

### Commitment to Sustainability and Innovation

Beyond accolades, Riya is committed to integrating sustainable practices into her designs, incorporating eco-friendly solutions and energy-efficient technologies. Maker Studio not only creates visually stunning spaces but also prioritizes environmental responsibility, ensuring that each project leaves a positive impact on both the client and the planet.

### Shaping the Future of Design

As Riya Bambhaniya Jain continues to redefine luxury and elegance through Maker Studio, her journey remains a testament to the transformative power of visionary design. With a steadfast commitment to client satisfaction, sustainable practices, and pushing the boundaries of creativity, Riya's legacy as a trailblazer in the industry is firmly established.





Sanchi Kapur and Shivang Verma

**M**ass: Void Architects, led by Sanchi Kapur and Shivang Verma, weave artistry with functionality. Their designs are not just spaces, they are experiences that celebrate innovation, mindful living, and a balanced approach.

### A Meeting of Minds: The Birth of Mass: Void Architects

Architecture is more than just the design of buildings; it is an art form that shapes the spaces where we live, work, and play. It is a discipline that marries creativity with engineering, aesthetics with functionality, and vision with practicality. Architects are storytellers, weaving narratives into the very fabric of the structures they create, influencing how we experience the world around us.

In this dynamic field, Mass: Void Architects stands out as a harmonious blend of artistry and practicality, brought to life by Sanchi Kapur and Shivang Verma. This dynamic duo isn't just an architecture and interior design firm; they are storytellers, weaving narratives into the very fabric of the spaces they create.

Their journey began not in a formal setting, but in the crucible of an internship. It was there, amidst the thrill of translating ideas into reality for real clients, that Sanchi and Shivang discovered a shared passion. Sanchi, with her discerning eye for aesthetics, and Shivang, a master of engineering and construction, formed a powerful synergy. Their unique combination of skills became the foundation of their dream – a design studio that wouldn't just

# A Symphony of Design: Mass: Void Architects - From Concept to Completion

create plans, but would see them through to fruition, embodying the "FROM FOUNDATION TO FURNITURE" philosophy.

### Gratitude as the Cornerstone: A Design Philosophy Rooted in Appreciation

Mass: Void Architects isn't driven by mere trends; their guiding light is a deep sense of gratitude. This thankfulness, for the universe, their team, and their clients, permeates everything they do. It translates into a design philosophy that views each space as a sacred trust, a canvas with the potential to be extraordinary. Their creations masterfully balance the interplay of mass and void, integrating light, air, water, fire, earth, and even the essence of space itself. Every project reflects a symphony of these elements, resulting in built environments that are both aesthetically pleasing and holistically balanced.

### Drawing Inspiration from a World of Influences: Curating a Design Voice

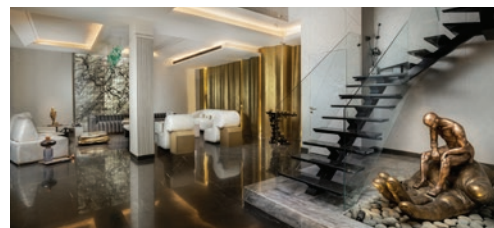
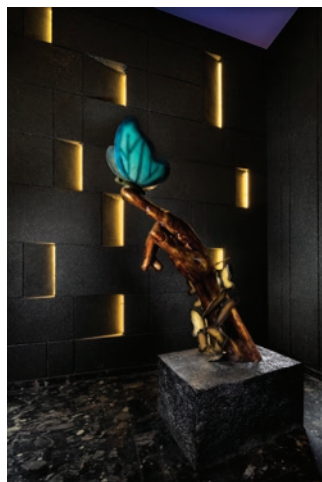
Inspiration for Sanchi and Shivang flows freely from the world around them. They are ardent patrons of the arts, constantly seeking out new forms of expression – a captivating melody, a breathtaking sculpture, a piece of evocative literature. They understand that design thrives on a tapestry of influences, but they are discerning curators. From the vast sea of information they encounter, they meticulously select only those elements that resonate with their core design principles. This selective permeability ensures their creations are not mere imitations, but rather exquisite expressions of their own unique design voice.

### Leaving a Legacy: Signature Projects as Poetic Expressions

The heart of Mass: Void Architects lies in leaving behind a legacy of signature projects. These aren't just buildings; they are testaments to the client's personality and aspirations. Each space becomes a poem, meticulously crafted to reflect the unique blend of ideas, needs, and dreams harbored within. They believe in pushing boundaries, in utilizing unconventional approaches to create spaces that not only function flawlessly but also set new benchmarks in design.

### Beyond Functionality: Transforming Dreams into Reality

Mass: Void Architects is a testament to the power of collaboration. Sanchi and Shivang, with their complementary skills and shared vision, have carved a niche in the industry. Their unwavering commitment to spirituality, gratitude, and innovative design has positioned them as leaders in their field. They continue to redefine the landscape of architecture and interior design by drawing inspiration from the world, by meticulously understanding their clients' desires, and by relentlessly pursuing the creation of spaces that are not just functional, but truly transformative.







Shera Bano Merchant

**A**t 1Square Designs, Shera Bano Merchant's visionary leadership blends sustainability, uniqueness, and luxury to create inspiring environments that transform and enrich every space they touch.

#### ABOUT THE FIRM:

1Square Designs, a premier consultancy based in Nagpur, specializes in architectural and interior design services that redefine lifestyles and living environments through the Eco-LUXE Habitats Framework, ensuring designs that deeply resonate: Environmentally Sustainable, Contextually tailored to Climate and Client needs, Optimally balancing Spaces, Costs, and Time, and providing Liveable, Maintenance-Free, Uniquely Designed, eXotic, Luxurious, and Engineered to Perfection spaces. Their approach seamlessly blends creativity with functionality, aiming to transform spaces into personalized havens that reflect individuality and enhance daily living experiences. At 1 Square Designs, they believe in crafting more than just spaces; their designs enrich experiences that resonate deeply with the soul of those inhabiting them. To achieve this goal they have formulated a unique Eco LUXE design Framework which guides them to achieve exceptional results.

#### ENVIRONMENTALLY Sustainable Spaces :

Integrating sun, wind, water, earth, and metal to create environmentally sustainable spaces that

# Crafting Dreams Into Eco-LUXE Habitats That Transcend Luxury

minimize negative impact and enhance harmony with nature through energy-efficient design.

#### CONNECT- Place Making to Connect with Yourself, Your Loved Ones, Your Surroundings and Nature

It entails precise spatial planning and refined design elements to cultivate an environment conducive to personal reflection, intimate interactions, seamless integration with surroundings, and a deep appreciation of natural elements.

#### OPTIMAL DESIGN:

Balancing Spaces, Cost, and Time focusing on maximizing space, cost, and time efficiency to enhance functionality and well-being while ensuring seamless project delivery and client satisfaction.

#### LIVEABLE and Maintenance Free Spaces:

Integrates nature-inspired luxury with health-promoting elements to create maintenance-free, luxurious spaces across various projects.

#### UNIQUELY Designed Exclusively For You

Customizing projects to meet diverse inhabitant needs, integrating cultural, behavioral, and aesthetic considerations.

#### eXOTIC and Luxurious

Using exotic materials and textures for lavish spaces showcasing exceptional craftsmanship and refined aesthetics, offering clients unparalleled luxury and indulgence.

#### ENGINEERED to Perfection

Meticulous craftsmanship ensures optimal performance, durability, and aesthetic appeal, surpassing industry standards for reliable, enduring spaces.

#### ABOUT THE PRINCIPAL DESIGNER:

Shera Bano Merchant, the visionary director of 1 Square Designs, established the firm with a mission to excel in "Imaginative Designs, Unrivalled Expertise, and Intense Involvement." Since its inception, she and her team have been dedicated to creating innovative and practical work that addresses social, economic, environmental, and aesthetic considerations in each project. Known for her vibrant personality and refined taste, Shera is passionate about designing spaces that are both purposeful and inspiring. Her journey spans over 27 years and encompasses a diverse range of projects, from earthquake rehabilitation and low-cost housing to corporate offices, institutions, community mosques, and premium residences.





Sunil Gambani

**D**rishti Architects, led by Sunil Gambani, blends innovation, sustainability, and integrity to craft timeless spaces, serving high-profile clients and delivering excellence through a passionate, versatile team.

In 2006, Sunil Gambani embarked on a transformative journey by founding Drishti Architects, leveraging his extensive 25-year tenure as a senior associate with the eminent architect Hafeez Contractor. This new venture was born from a profound vision: to channel the transformative power of design and architecture into creating enhanced and inspiring spaces. Today, Drishti Architects stands tall as a multi-disciplinary firm, renowned for its pragmatic and sincere design philosophy. The firm's adaptability and unwavering commitment to integrity have cemented its reputation as a trusted leader in the industry.

Drishti Architects has always emphasized the importance of creating spaces that not only meet the immediate needs of the clients but also stand the test of time. The firm's design philosophy revolves around the seamless integration of functionality, aesthetics, and sustainability. Sunil Gambani's leadership has instilled a culture of continuous learning and innovation, enabling the firm to stay ahead in a competitive industry.

#### Distinguished Clientele

Drishti Architects boasts an impressive roster of clients, including some of the most influential names in business and real estate. From Mr. Niranjan Hiranandani of the Hiranandani Group to Mr. Surendra Hiranandani of the House of Hiranandani, and Mr. Susir Kumar, former Chairman of Intelnet

# Drishti Architects: Crafting Spaces with Vision

Global, the firm's client list is a testament to its excellence and reliability.

The firm's ability to build strong relationships with such high-profile clients speaks volumes about its professionalism and dedication. These relationships are built on trust, transparency, and a deep understanding of the clients' vision and requirements. Drishti Architects' commitment to excellence ensures that each project is executed to the highest standards, exceeding client expectations every time.

#### Signature Projects

Drishti Architects' portfolio is as diverse as it is impressive. The firm has designed numerous landmark projects, each reflecting its commitment to excellence and attention to detail. Key projects include the Sindh Colony Bungalows, residential and commercial projects in Congo, and the prestigious Residence at Koregaon Park, Pune. The R. N. Singh Memorial in Gorakhpur and Hinduja Finances in Chennai further highlight the firm's versatility.

Drishti Architects' approach to each project is holistic, considering all aspects of the design and execution process. The firm places a strong emphasis on environmental sustainability, ensuring that its projects contribute positively to the surrounding ecosystem. This commitment to sustainability is evident in the use of green building practices and materials, as well as in the firm's efforts to create energy-efficient and eco-friendly spaces.

#### A Team Driven by Passion

At the heart of Drishti Architects is a dedicated team of designers who share a common passion for design excellence. This close-knit team is driven by a cooperative spirit and a commitment to continuous improvement. Senior colleagues mentor younger staff, fostering an environment of learning and growth. This dynamic team thrives on creativity and innovation, always ready to go beyond standard parameters to deliver outstanding results.

Drishti Architects' long-standing relationships with clients are a testament to the firm's collaborative approach and dedication to maximizing the potential of every project. From concept to completion and beyond, the team's attention to detail ensures that each project meets the highest standards of quality and design.

In an ever-evolving design environment, Drishti Architects remains at the forefront, filling the gaps with innovative and thoughtful design solutions. Their work not only enhances the lives of their clients but also contributes positively to the broader environment and community. With a strong foundation built on integrity, creativity, and collaboration, Drishti Architects continues to shape the future of design and architecture.







Anirban Bhaduri and Sanjay Mondal

**I**NNATE transforms eastern India's architectural landscape with innovative, sustainable designs that inspire and endure, blending functionality and beauty under visionary leaders Anirban Bhaduri and Sanjay Mondal.

**E**nvisioned in 2005 by Ar. Anirban Bhaduri, INNATE began as a modest architectural firm with a grand vision: to transform the built environment. Now, nearly two decades later, under the dual leadership of Anirban Bhaduri and co-partner Sanjay Mondal, INNATE's influence spans across eastern India. The firm boasts a multidisciplinary team of over 50 professionals, including engineers, architects, planners, and interior designers, all driven by the challenge of creating harmonious and inspiring spaces.

#### **A Holistic Approach to Architecture**

INNATE thrives on the belief that architecture must be both utilitarian and aesthetically pleasing. Their design philosophy is anchored in three principles: an analytical approach, the application of common sense, and sensitivity to the immediate environment. By incorporating humanist values and restoring nature within the built environment, INNATE integrates and innovates the best design and construction techniques to create spaces that resonate with people.

With more than seventy million square feet of development, INNATE continues to shape the architectural landscape of eastern India, delivering designs that embody their ethos of "designing spaces that inspire and endure." Their projects range from sprawling residential housing to premium luxury hotels, schools, cultural centers, hospitals,

# Transforming the Architectural Landscape of Eastern India: The Story of INNATE

office spaces, and signature shopping malls. Each design is a testament to their commitment to functionality, aesthetic appeal, and meticulous attention to detail, with a strong emphasis on green practices and sustainability.

#### **Innovation and Real-World Impact**

INNATE's pragmatic approach focuses on real-world impacts rather than merely checking boxes. This philosophy sets their designs apart, ensuring they are both beautiful and functional. Their portfolio includes a wide variety of projects such as museums, temples, and congregational spaces for various religious beliefs. These sensitive designs highlight INNATE's ability to blend cultural significance with modern architectural practices.

The firm is involved in numerous projects across India, reflecting their deep understanding of how contemporary life constantly evolves. INNATE believes that design is a reflection of society, and as society changes, so should design.

#### **Diverse Portfolio and Future Ambitions**

INNATE's extensive portfolio includes residential, commercial, and shopping malls, institutional buildings, resorts and hotels, logistic hubs, industrial structures, and film studios. With more than forty million square feet of space set to be built in the coming years, INNATE is poised to continue its journey of transformation and growth. Their work with major stakeholders, developers, and institutions on diverse and inspiring projects has provided invaluable experience and knowledge, making INNATE a flexible yet focused, playful yet strict, young yet experienced organization.

#### **Sybarite Studio: Elevating Interior Design**

Sybarite Studio, the interior design division of INNATE, is dedicated to creating articulate and magical interiors. Led by Ar. Shantanu A. Bhowmick, the team focuses on providing creative and functional solutions for a diverse range of interior projects. Their objective is to offer eloquent, utopian yet affordable, and pragmatic solutions, combining creative imagination with functional logic and competent management.

#### **A Future of Continued Excellence**

As INNATE looks to the future, the firm, led by Anirban Bhaduri and Sanjay Mondal, remains committed to innovation, sustainability, and design excellence. With projects like cutting-edge research facilities and sustainable residential and commercial complexes, they are poised to meet the demand for eco-friendly living and working spaces.





Neeta Kumar

**I**nhabit Design Studio, led by visionary Neeta Kumar, blends sustainability, innovation, and timeless elegance to create luxurious, bespoke interiors that transform spaces into extraordinary, harmonious environments.

Interior design, as an art and science, revolves around enhancing the interiors of a space to achieve a healthier and more aesthetically pleasing environment. Inhabit Design Studio embodies this philosophy, creating spaces that are not just beautiful but also functional and reflective of the client's personality. The studio's approach is holistic, considering every element from furniture to fabrics, and lighting to layout, ensuring a harmonious balance.

Inhabit Design Studio, founded in 2005 by the visionary designer Neeta Kumar, has carved a niche in the luxury interiors market. With an impressive educational background including a Master's in Business Administration and diplomas in Furniture Design and Interior Design from Central St. Martins and Chelsea College of Art and Design (UK), Neeta Kumar infused the brand with a unique blend of business insight and creative excellence from the very beginning.

#### Neeta Kumar: The Visionary Behind Inhabit

Neeta Kumar's journey in design is marked by her passion for beautifying spaces and her relentless pursuit of excellence. Her academic achievements laid a strong foundation for her career, allowing her to blend business acumen with artistic vision seamlessly. Her ability to transform ordinary spaces into extraordinary experiences has solidified her reputation as a leading figure in luxury interior design.

# Inhabit Design Studio: Crafting Luxury with Heart and Vision

Neeta's approach to design is both intuitive and informed, drawing inspiration from global trends while maintaining a distinctive Indian aesthetic. Her leadership has been instrumental in fostering a culture of creativity and excellence at Inhabit, inspiring her team to push boundaries and innovate continually.

#### Expansion and Innovation

Starting as a bespoke furniture design studio, Inhabit quickly made its mark. With the launch of its first retail store in Hyderabad, featuring a state-of-the-art manufacturing facility, the brand began producing exclusive designs locally. This expansion enabled Inhabit to diversify its offerings, and by 2010, it was managing turnkey interior projects, specializing in luxury residential interiors. This strategic growth highlighted Inhabit's dedication to quality and innovation, setting new benchmarks in cities like Delhi. Inhabit's projects are distinguished by meticulous attention to detail, innovative space utilization, and a keen sense of aesthetics. The studio prides itself on staying ahead of design trends while maintaining a timeless appeal.

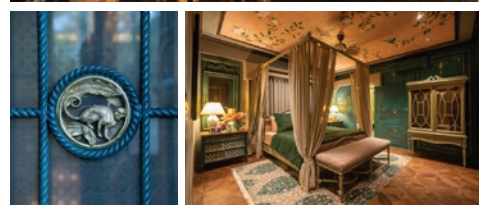
#### Commitment to Sustainability

Inhabit's dedication to the "Make in India" initiative is evident in their choice of materials and manufacturing processes. The brand emphasizes sustainability by using reclaimed teak logs to craft their beautiful, natural products. This eco-friendly approach not only ensures high-quality, durable furniture but also underscores Inhabit's responsibility towards the environment. By merging traditional craftsmanship with modern design, Inhabit creates pieces that are as sustainable as they are stylish.

Sustainability at Inhabit goes beyond materials. The studio adopts practices that reduce waste and promote energy efficiency, reflecting a deep commitment to the planet. This environmentally conscious ethos resonates with clients who are increasingly aware of the impact of their choices on the world around them.

#### The Future of Inhabit

With over 18 years of experience, Neeta Kumar continues to lead Inhabit with the same enthusiasm and creativity that marked its inception. The brand remains at the forefront of luxury interior design, constantly pushing boundaries and setting new standards. Inhabit's bespoke products, proudly made in India, reflect the brand's commitment to quality, innovation, and environmental consciousness. As Inhabit looks to the future, it continues to embody Neeta Kumar's vision of creating spaces that are not only beautiful but also meaningful and sustainable.







Lopa Nagda and Heemanshu Nagda

**ε**EPSILON, under the visionary leadership of Architect Lopa Nagda and Engineer Heemanshu Nagda, excels in crafting innovative, nature-inspired architectural and interior designs that transform dreams into stunning, sustainable realities.

**F**ounded in 2002, εEPSILON has been a beacon of innovation and elegance in the realms of architecture, interior design, and project management. Led by the distinguished duo, Architect Lopa Nagda (B.Arch., gold medalist) and Engineer Heemanshu Nagda (B.E. Const., gold medalist), this Mumbai-based firm comprises a team of sixteen dedicated professionals. With a rich portfolio and esteemed clientele, εEPSILON is committed to creating extraordinary experiences for their clients' dream projects.

#### A Philosophy Rooted in Nature

εEPSILON's design philosophy is rooted in the transformative power of nature. They believe a deep connection to the natural world is fundamental to human well-being. This philosophy manifests in spaces that resonate with nature, fostering relaxation and a profound sense of connection. Their designs prioritize a harmonious balance between human needs and the environment, resulting in timeless and sustainable architecture.

εEPSILON goes beyond aesthetics. Natural light, ventilation, and eco-friendly materials are the building blocks of their projects. They don't just create structures; they craft living, breathing environments that promote well-being and minimize environmental impact. With εEPSILON, every building becomes an extension of nature, enhancing the quality of life for those who inhabit it.

# εEPSILON: Crystallising Dreams Through Architecture, Interiors & Project Management

#### The Design Journey

εEPSILON believes that architecture should be a companion in life's most memorable moments, rather than just fulfilling functional requirements. Their design philosophy emphasizes harmony and user preferences over fleeting trends. By guiding clients through the design journey and fostering equal collaboration between their team and the users, εEPSILON ensures that each project develops its unique identity.

The process begins with understanding the client's vision and requirements. Through detailed discussions and collaborative brainstorming sessions, the team translates ideas into tangible design concepts. This client-centric approach ensures that the final design not only meets but exceeds expectations.

#### Signature Projects

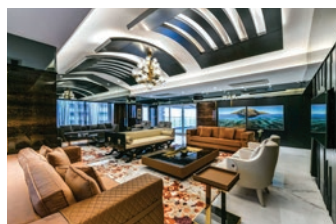
They have served as project management consultants for luxury residences, including Mrs. Rekha Rakesh Jhunjhunwala's homes at Malabar Hill and Lonavla, Mr. Ravi Dharamshi's turnkey holiday home in Pawna, Mr. Sundar Iyer's residence, and Mr. Kalpraj Dharamshi's home at Madhuli Apartments. They manage JBCN schools, luxury residences at Oberoi 360 West, and all Swastik Builders projects. They are currently advising on M/s Tejukaya's 50-storey residential project and M/s PrinceCare's 36-storey tower in Mumbai. Their turnkey design and project management skills are highlighted by India's only private 31-acre luxury farmhouse for Mrs. Viral Amal Parikh, featuring a 105' bowling alley and helipad. Their versatility is evident in Mr. Chetan Cholera's duplex, Mr. Rupesh Khona's residence, and commercial offices at Neptune's Business District, showcasing their ability to meet diverse design demands simultaneously.

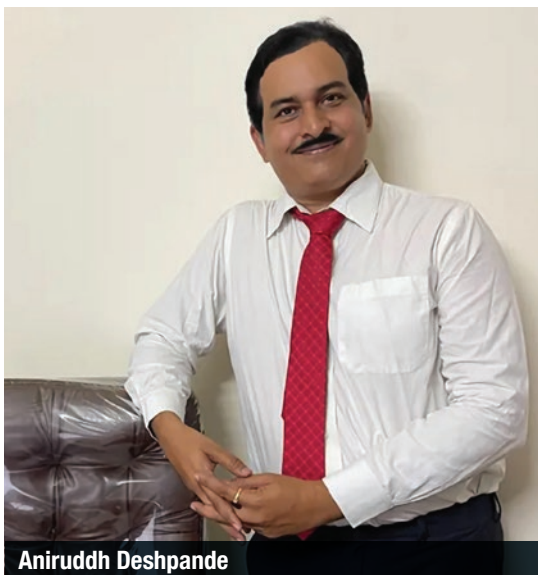
#### Creating Lasting Impressions

εEPSILON's passion for impactful spaces fuels their reputation for exceeding expectations. They don't just build structures, they craft environments that elevate lives and create lasting memories. This dedication to excellence shines through in every residential, commercial, and institutional project they undertake. Their success hinges on constant evolution, keeping pace with cutting-edge trends and technologies. Sustainability, smart tech, and user-centric design are cornerstones of their approach, ensuring each project remains relevant and future-proof.

#### A Vision for the Future

With a leadership duo as visionary as Arch. Lopa Nagda and Eng. Heemanshu Nagda at the helm, εEPSILON isn't just an architectural firm, it's a wellspring of transformative design. They're boundary-pushers, translating dreams into stunning realities with meticulous project management.





Aniruddh Deshpande

**I**n the tranquil town of Kolhapur, Maharashtra, Aniruddh Deshpande has made a name for himself as a dedicated architect. After earning his B. Arch degree, he embarked on a remarkable journey. In 2000, he established SHUBHLAXMEE ARCHITECTS AND INTERIOR DESIGNERS, a dynamic architectural consultancy firm providing a wide array of design solutions under one roof.

Aniruddh has built an extensive design portfolio that includes private residences, temples, resorts, and large-scale educational and medical healthcare institutions. This has established a significant architectural presence across 16 states in India, showcasing the firm's broad-ranging influence.

### Design Philosophy

Principal Architect Aniruddh Deshpande's design philosophy centres around the concept of "The Soul" of buildings. He strongly believes that each structure possesses a distinct character, influenced by its design, surroundings, and residents. This character establishes a bond between the building and its environment, imbuing it with an atmosphere and essence that evolve over time, weather conditions, and occupancy.

Aniruddh's design approach underscores how a building's individuality engages its inhabitants and shapes their experiences within the space. This journey unfolds from the initial design concepts through to its outward appearance, profoundly impacting the inner world of those who interact with the structure.

# Aniruddh Deshpande The Passionate Architect

## A Significant Breakthrough project (The M.B.A. Institute Project)

During the early stages of his career, Aniruddh focused on institutional designs, but a notable breakthrough came in 2007 with the M.B.A. Institute project on Karve Road, Pune. The project's innovative and appealing design represented a significant milestone for both Aniruddh and his firm.

## The Dream Projects

Aniruddh's design aspirations reflect his dreams and ambitions. These include projects such as the sprawling secondary school campus at Omerga, hilltop-mounted Banyan Tree International School in Pune, the lotus-shaped Shri Gajanan Maharaj Smruti-Mandir in Nagpur, a vaulted n stepped resort on the lush green slopes of Panchgani, and an internationally acclaimed commercial complex wrapped in umbrellas in Karad. Each of these projects continues to evolve and await their moment to become reality.

Aniruddh's expertise extends to the healthcare and education sectors, adding diversity to his portfolio. His ongoing projects encompass smartly designed M.B.A. College, Pune, ambitious Central Instrumentation Laboratory and Shri Guru Govindsinghji Adhyasan Kendra at S.R.T.M. University in Nanded, the Orthopaedic Atharva Hospital in Pune, Yashswini and Pangi Hospitals in Athani, and the PACE Multi-skill Training Centres in Maharashtra, Chhattisgarh, Madhya Pradesh, Uttar Pradesh, Andhra Pradesh. Additionally, he is involved in projects like the Annapurna campus of Para-medical College with hostels and a central kitchen dining facility in Athani, as well as the 50-bedded Mahalaxmi Diatone Hospital in Kolhapur, Maharashtra. Notably, the Indoor Sports Complex with Olympic size swimming pool at Latur, Chandak Farmhouse in Bengaluru, constructed from shipping containers, showcases his innovative design approach.









huuski  
FURNITURE WITH CHARACTER

YOUR  
Vision  
OUR  
Craft

Huski Furniture exudes character and charm, blending traditional craftsmanship with modern design. Each piece is meticulously handcrafted, showcasing unique details and superior quality. Huski Furniture stands out for its timeless elegance and distinctive personality, making it the perfect choice for those seeking furniture that tells a story.



SAJAVAT  
SINCE 1992 VALSAD | VAPI

clart  
heart to heart

Location: Vapi

Email: [connect@huuski.in](mailto:connect@huuski.in)